

**THE LONDON RESORT  
DEVELOPMENT CONSENT ORDER**

**CONSULTATION REPORT APPENDICES**

**Reference: BC080001**

**5.1 Consultation Report Appendix 4.14 (part 2) (6 of 14)**

**THE LONDON RESORT  
DEVELOPMENT CONSENT ORDER**

**CONSULTATION REPORT APPENDICES**

**Reference: BC080001**

**Appendix 4.14 (Part 2)**

**Copy of Section 48 notices, as placed**



**LONDON RESORT COMPANY HOLDINGS LTD**

**SECTION 48, PLANNING ACT 2008**

**REGULATION 4, INFRASTRUCTURE PLANNING (APPLICATIONS: PRESCRIBED FORMS AND PROCEDURE) REGULATIONS 2009**

**LONDON PARAMOUNT ENTERTAINMENT RESORT DEVELOPMENT CONSENT ORDER**

**NOTICE PUBLICISING A PROPOSED APPLICATION FOR A DEVELOPMENT CONSENT ORDER ("DCO")**

Notice is hereby given that London Resort Company Holdings Ltd ("LRCH") of 17 Albemarle Street, London W1S 4HP intends to apply to the Secretary of State for Communities and Local Government under section 37 of the Planning Act 2008 for the above mentioned DCO ("the proposed application").

The proposed application for the London Paramount Entertainment Resort project ("the Resort") which will be located on the Swanscombe Peninsula in the County of Kent, in the District of Dartford and the District of Gravesham, will be a nationally significant visitor attraction and leisure resort comprising a leisure core up to 50 ha in area, themed around the films and television programmes of Paramount Pictures, and currently including (but not limited to) the British Broadcasting Corporation (BBC) and Aardman Animations.

The Resort core will include—

- events spaces, rides, attractions, day-time and night-time shows and parades, entertainment venues, cinemas, theatres and nightclubs;
- ancillary food and beverage, retail, back of house/service and guest service facilities;
- hotel rooms as a part of a total provision of up to 5,000 hotel bedrooms across the Resort development as a whole;
- associated car parking as part of a maximum provision of 14,000 spaces; and
- hard and soft landscaping including amenity water features such as ponds and canals.

The proposed Resort development also includes the following principal elements—

- the creation of a visitor entrance square;
- the creation of a range of hotels, a water park and a transport interchange at the visitor entrance square;
- the construction of a new dual carriageway access road approximately 2.8 kilometres in length, between the A2(T)/B259 junction, and the Resort development area;
- the provision of a transport interchange at Ebbsfleet International Station, pedestrian facilities from London Road to the River Thames; pedestrian facilities and cycle track route along the Thames Path route; enhancements to the existing jetty on the River Thames to facilitate access by boat for the delivery of construction materials, and the creation of a floating pontoon for embarkment and disembarkment of visitors;
- the creation of a conference and exhibition event space;
- the creation of a creative business hub and office space for the creative industries;
- the creation of a green zone to include areas of environmental enhancement and wildlife habitat creation beside the River Thames;
- the provision of waste management, power generation and power distribution facilities;
- the enhancement of flood defence works; and
- the provision of ancillary emergency and security features.

The proposed Resort is "EIA development" for the purposes of the Infrastructure Planning (Environmental Impact Assessment) Regulations 2009. This means that the proposed works constitute development for which an Environmental Impact Assessment would be required. LRCH's proposed application for a DCO will, therefore, be accompanied by an Environmental Statement, containing the information about the environmental effects of the proposed development.

The documents, plans and maps showing the nature and location of the proposed application, including information so far compiled about

environmental impacts (preliminary environmental information), may be inspected free of charge from **Monday 27 April 2015 to Friday 5 June 2015** at the locations and times set out below:

Venue	Opening hours
<b>DARTFORD</b>	
Dartford Council Offices Civic Centre, Home Gardens, Dartford, Kent DA1 1DR	Monday, Tuesday, Wednesday & Thursday: 8:45am–5:15pm Friday: 8:45am–4:45pm Saturday & Sunday: Closed
Swanscombe and Greenhithe Town Council Council Offices; The Grove, Kent DA10 0GA	Monday, Tuesday, Thursday & Friday: 9:30am–1pm & 1:45pm–4pm Wednesday, Saturday & Sunday: Closed
Community Café Old Fire Station Café, Church Road, Swanscombe, Kent DA10 0HF	Monday, Tuesday, Wednesday, Thursday & Friday: 10am–2pm Saturday & Sunday: Closed
Greenhithe Library London Road, Greenhithe, Kent DA9 9EJ	Tuesday & Thursday: 1pm–5:30pm Saturday 9:30am–12:30pm Monday, Wednesday, Friday & Sunday: Closed
Swan Valley Library Swanscombe Library Discovery Centre, Ebbsfleet Academy, Southfleet Road, Swanscombe, Kent, DA10 0BZ	Monday, Tuesday & Saturday: 10am–2pm Wednesday & Friday: 1pm–5pm Thursday & Sunday: Closed
Longfield Library 49 Main Road, Longfield, Kent DA3 7QT	Tuesday & Friday: 1pm–6pm Wednesday & Thursday: 9am–1pm Saturday 10am–2pm Monday & Sunday: Closed
Dartford Library Central Park, Market Street, Dartford, Kent DA1 1EU	Monday, Tuesday, Wednesday, Thursday & Friday: 8:30am–6pm Saturday: 9am–5pm Sunday: Closed
Temple Hill Library Temple Hill Square, Dartford, Kent DA1 5HY	Monday, Tuesday, Thursday & Friday: 9am–6pm Saturday: 10am–2pm Wednesday & Sunday: Closed
Ashen Drive Library Ashen Drive, Dartford, Kent DA1 3LY	Monday & Thursday: 2pm–6pm Tuesday & Friday: 9am–1pm Saturday: 10am–12pm Wednesday & Sunday: Closed
Fleetdown Library Swaledale Road, Dartford, Kent DA2 6JZ	Tuesday, Thursday & Friday: 9:30am–5:30pm Wednesday: 1:30pm–5:30pm Saturday: 10am–12pm Monday & Sunday: Closed
Sutton-at-Hone Library Main Road, Sutton-At-Hone, Dartford, Kent DA4 9HQ	Monday & Friday: 10am–6pm Tuesday & Saturday: 10am–2pm Wednesday, Thursday & Sunday: Closed
Summerhouse Drive Library 80 Summerhouse, Bexley, Kent DA6 2EE	Tuesday & Thursday: 9am–6pm Friday: 2pm–6pm Saturday: 10am–2pm Monday, Wednesday & Sunday: Closed

Venue	Opening hours
<b>GRAVESHAM</b>	
Gravesham Borough Council Civic Centre and Gateway, Windmill Street, Gravesend, Kent DA12 1AU	Monday, Tuesday, Wednesday, Thursday & Friday: 9am–5pm Saturday & Sunday: Closed
Coldharbour Library Coldharbour Road, Northfleet, Gravesend, Kent DA11 8AE	Monday, Wednesday, Thursday & Friday: 9am–6pm Tuesday: 9am–8pm Saturday: 9am–5pm Sunday: Closed
Gravesend Library Windmill Street, Gravesend, Kent DA12 1BE	Monday, Tuesday, Wednesday, Thursday & Friday: 9am–6pm Saturday: 9am–5pm Sunday: Closed
Dashwood Library Dashwood Road, Northfleet, Gravesend, Kent DA11 7LY	Monday & Friday: 9:30am–1pm & 2pm–5pm Tuesday & Saturday: 2pm–5pm Wednesday, Thursday & Sunday: Closed
Higham Library Villa Road, Higham, Rochester, Kent ME3 7BS	Monday, Wednesday & Friday: 9am–1pm Tuesday & Thursday: 2pm–5:30pm Saturday: 10am–2pm Sunday: Closed
Hive House Library Hive House, 10-11 The Hive, Northfleet, Gravesend, Kent DA11 9DE	Monday & Tuesday: 9am–12:30pm Thursday & Friday: 2pm–5pm Saturday: 10am–2pm Wednesday & Sunday: Closed
King's Farm Library Sun Lane, Gravesend, Kent DA12 5HR	Monday, Tuesday, Wednesday & Friday: 9am–5pm Saturday: 10am–2pm Thursday & Sunday: Closed
Marling Cross Library 266 Mackenzie Way, Gravesend, Kent DA12 5TY	Tuesday: 9:30am–1pm & 2pm–5pm Thursday: 9:30am–1pm Friday: 2pm–5pm Saturday: 2pm–4pm Monday, Wednesday & Sunday: Closed
Meopham Library Wrotham Road, Meopham, Gravesend, Kent DA13 0AH	Monday, Tuesday, Thursday & Friday: 9am–6pm Saturday: 9am–1pm Wednesday & Sunday: Closed
Riverview Park Library The Alma, Leander Drive, Gravesend, Kent DA12 4NG	Monday, Tuesday, Wednesday & Friday: 9am–6pm Saturday: 10am–2pm Thursday & Sunday: Closed
Vigo Library Village Hall, The Bay, Vigo, Gravesend, Kent DA13 0TD	Tuesday: 11am–1pm & 2pm–5pm Saturday: 9:30am–2:30pm Monday, Wednesday, Thursday, Friday & Sunday: Closed
<b>KENT (Maidstone)</b>	
Kent County Council County Hall, Maidstone, Kent ME14 1XQ	Monday, Tuesday, Wednesday, Thursday & Friday: 9am–5pm Saturday & Sunday: Closed
Maidstone Library Kent History and Library Centre, James Whatman Way, Maidstone, Kent ME14 1LQ	Monday, Tuesday, Wednesday & Friday: 9am–6pm Thursday: 9am–8pm Saturday: 9am–5pm Sunday: Closed

Venue	Opening hours
<b>SEVENOAKS</b>	
Sevenoaks Library Buckhurst Lane, Sevenoaks, Kent TN13 1LQ	Monday, Tuesday, Wednesday & Friday: 9am–6pm Thursday: 9am–8pm Saturday: 9am–5pm Sunday: Closed
<b>TONBRIDGE &amp; MALLING</b>	
Tonbridge Library 1 Avebury Avenue, Tonbridge, Kent TN9 1TG	Monday, Tuesday, Wednesday & Friday: 9am–6pm Thursday: 9am–8pm Saturday: 9am–5pm Sunday: Closed
<b>THURROCK</b>	
Grays Central Library Thameside Complex, Orsett Road, Grays, Essex RM17 5DX	Monday, Tuesday, Wednesday & Thursday: 10am–7pm Friday & Saturday: 10am–5pm Sunday: Closed
<b>LONDON BOROUGH OF BEXLEY</b>	
Central Library Townley Road, Bexleyheath DA6 7HJ	Monday, Tuesday & Wednesday: 10am–5.30pm Thursday: 10am–7pm Friday & Saturday: 10am–1pm Sunday: 1pm–5pm
<b>LONDON BOROUGH OF BROMLEY</b>	
Central Library High Street, Bromley BR1 1EX	Monday, Tuesday, Wednesday & Friday: 9.30am–6pm Thursday: 9.30am–8pm Saturday: 9.30am–5pm Sunday: Closed
<b>MEDWAY</b>	
Medway Council Gun Wharf, Dock Road, Chatham ME4 4TR	Monday, Tuesday, Wednesday, Thursday & Friday: 10am–4pm Saturday & Sunday: Closed

**Project information may continue to be updated until Friday 8 May 2015 and you are therefore advised to check the website [www.londonparamount.info](http://www.londonparamount.info) and deposit locations for such updates.**

Copies of the documents, plans and maps will be available on LRCH's website at [www.londonparamount.info](http://www.londonparamount.info) from **Monday 27 April 2015**. They can also be provided on request by emailing [consultation@londonparamount.info](mailto:consultation@londonparamount.info), by calling the **Freephone number 0800 008 6765** Mondays to Fridays between 9am and 5.30pm or by writing to **FREEPOST Ref: RTRB-LUUI-AGBY, London Paramount, c/o PPS Group, Sky Light City Tower, 50 Basinghall Street, London, EC2V 5DE**. A reasonable copying charge will apply (up to a maximum of £300 for the full suite of documents). The documents can also be obtained on a DVD, free of charge, by contacting LRCH as detailed here.

LRCH is consulting on the proposed application. Any representations on the proposals should be made in writing to "**FREEPOST Ref: RTRB-LUUI-AGBY, London Paramount, c/o PPS Group, Sky Light City Tower, 50 Basinghall Street, London, EC2V 5DE**", sent by email to [consultation@londonparamount.info](mailto:consultation@londonparamount.info), or by completing the feedback form which can be found on the LRCH's website at [www.londonparamount.info](http://www.londonparamount.info). The deadline for receiving responses is **Friday 5 June 2015**. Please quote "London Paramount Entertainment Resort Order" in any correspondence.

LRCH requests that responses state the grounds of representation, indicate who is making it, and provide an address to which any correspondence relating to the representation may be sent.

We may be required to make copies of representations available to the Secretary of State. We will, however, request that personal details are not placed on the public record. Personal details will be held securely in accordance with the Data Protection Act 1998 and will be used solely in connection with the consultation process and the development of the Project and, except as noted above, will not be disclosed to any third parties.

Bircham Dyson Bell LLP  
Solicitors and Parliamentary Agents acting for LRCH  
50 Broadway, London SW1H 0BL  
12 April 2015



# The Reporter

ARCHANT } CHANGING THE SHAPE OF LOCAL NEWS April 23, 2015

Follow us at



@bexleytimes



BexleyTimes



streetlife.com

35p where sold

**12 MONTHS  
LICENCE**

**FULLY FURNISHED  
PARK HOMES & LODGES**

## WOODLANDS COUNTRY PARK KENT

A FRESH START...THE QUIET LIFE

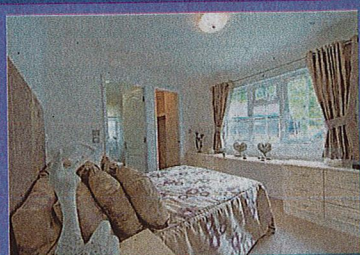


**AS SEEN  
ON TV**

**01580 291216**

Tenterden Road, Biddenden, Kent TN27 8BT

[www.leisureparksuk.co.uk](http://www.leisureparksuk.co.uk)





# The Reporter

ARCHANT } CHANGING THE SHAPE OF LOCAL NEWS April 23, 2015

Follow us at



@bexleytimes



BexleyTimes



streetlife.com

35p where sold

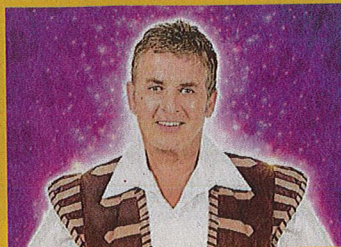
## PM joins crowds at Sikh festival

Thousands take part in Gravesend's colourful and bustling Vaisakhi spring celebration. See inside...

[gravesendreporter.co.uk](http://gravesendreporter.co.uk)

Meet the new Lord Mayor!

See inside



X-Perience the great outdoors

See Motors



**LONDON RESORT COMPANY HOLDINGS LTD**

**SECTION 48, PLANNING ACT 2008**

**REGULATION 4, INFRASTRUCTURE PLANNING (APPLICATIONS: PRESCRIBED FORMS AND PROCEDURE) REGULATIONS 2009**

**LONDON PARAMOUNT ENTERTAINMENT RESORT DEVELOPMENT CONSENT ORDER**

**NOTICE PUBLICISING A PROPOSED APPLICATION FOR A DEVELOPMENT CONSENT ORDER ("DCO")**

Notice is hereby given that London Resort Company Holdings Ltd ("LRCH") of 17 Albemarle Street, London W1S 4HP intends to apply to the Secretary of State for Communities and Local Government under section 37 of the Planning Act 2008 for the above mentioned DCO ("the proposed application").

The proposed application for the London Paramount Entertainment Resort project ("the Resort") which will be located on the Swanscombe Peninsula in the County of Kent, in the District of Dartford and the District of Gravesham, will be a nationally significant visitor attraction and leisure resort comprising a leisure core up to 50 ha in area, themed around the films and television programmes of Paramount Pictures, and currently including (but not limited to) the British Broadcasting Corporation (BBC) and Aardman Animations.

The Resort core will include—

- events spaces, rides, attractions, day-time and night-time shows and parades, entertainment venues, cinemas, theatres and nightclubs;
- ancillary food and beverage, retail, back of house/service and guest service facilities;
- hotel rooms as a part of a total provision of up to 5,000 hotel bedrooms across the Resort development as a whole;
- associated car parking as part of a maximum provision of 14,000 spaces; and
- hard and soft landscaping including amenity water features such as ponds and canals.

The proposed Resort development also includes the following principal elements—

- the creation of a visitor entrance square;
- the creation of a range of hotels, a water park and a transport interchange at the visitor entrance square;
- the construction of a new dual carriageway access road approximately 2.8 kilometres in length, between the A2(T)/B259 junction, and the Resort development area;
- the provision of a transport interchange at Ebbsfleet International Station, pedestrian facilities from London Road to the River Thames; pedestrian facilities and cycle track route along the Thames Path route; enhancements to the existing jetty on the River Thames to facilitate access by boat for the delivery of construction materials, and the creation of a floating pontoon for embarkment and disembarkment of visitors;
- the creation of a conference and exhibition event space;
- the creation of a creative business hub and office space for the creative industries;
- the creation of a green zone to include areas of environmental enhancement and wildlife habitat creation beside the River Thames;
- the provision of waste management, power generation and power distribution facilities;
- the enhancement of flood defence works; and
- the provision of ancillary emergency and security features.

The proposed Resort is "EIA development" for the purposes of the Infrastructure Planning (Environmental Impact Assessment) Regulations 2009. This means that the proposed works constitute development for which an Environmental Impact Assessment would be required. LRCH's proposed application for a DCO will, therefore, be accompanied by an Environmental Statement, containing the information about the environmental effects of the proposed development.

The documents, plans and maps showing the nature and location of the proposed application, including information so far compiled about environmental impacts (preliminary environmental information), may be inspected free of charge from **Monday 27 April 2015 to Friday 5 June 2015** at the locations and times set out below:

Venue	Opening hours
<b>DARTFORD</b>	
Dartford Council Offices Civic Centre, Home Gardens, Dartford, Kent DA1 1DR	Monday, Tuesday, Wednesday & Thursday: 8:45am–5:15pm Friday: 8:45am–4:45pm Saturday & Sunday: Closed
Swanscombe and Greenhithe Town Council Council Offices, The Grove, Kent DA10 0GA	Monday, Tuesday, Thursday & Friday: 9:30am– 1pm & 1:45pm–4pm Wednesday, Saturday & Sunday: Closed
Community Café Old Fire Station Café, Church Road, Swanscombe, Kent DA10 0HF	Monday, Tuesday, Wednesday, Thursday & Friday: 10am–2pm Saturday & Sunday: Closed
Greenhithe Library London Road, Greenhithe, Kent DA9 9EJ	Tuesday & Thursday: 1pm–5:30pm Saturday 9:30am–12:30pm Monday, Wednesday, Friday & Sunday: Closed
Swan Valley Library Swanscombe Library Discovery Centre, Ebbsfleet Academy, Southfleet Road, Swanscombe, Kent, DA10 0BZ	Monday, Tuesday & Saturday: 10am–2pm Wednesday & Friday: 1pm–5pm Thursday & Sunday: Closed

Venue	Opening hours
Longfield Library 49 Main Road, Longfield, Kent DA3 7QT	Tuesday & Friday: 1pm–6pm Wednesday & Thursday: 9am–1pm Saturday 10am–2pm Monday & Sunday: Closed
Dartford Library Central Park, Market Street, Dartford, Kent DA1 1EU	Monday, Tuesday, Wednesday, Thursday & Friday: 8:30am–6pm Saturday: 9am–5pm Sunday: Closed
Temple Hill Library Temple Hill Square, Dartford, Kent DA1 5HY	Monday, Tuesday, Thursday & Friday: 9am–6pm Saturday: 10am–2pm Wednesday & Sunday: Closed
Ashen Drive Library Ashen Drive, Dartford, Kent DA1 3LY	Monday & Thursday: 2pm–6pm Tuesday & Friday: 9am–1pm Saturday: 10am–12pm Wednesday & Sunday: Closed
Fleetdown Library Swaledale Road, Dartford, Kent DA2 6JZ	Tuesday, Thursday & Friday: 9:30am–5:30pm Wednesday: 1:30pm–5:30pm Saturday: 10am–12pm Monday & Sunday: Closed
Sutton-at-Hone Library Main Road, Sutton-At-Hone, Dartford, Kent DA4 9HQ	Monday & Friday: 10am–6pm Tuesday & Saturday: 10am–2pm Wednesday, Thursday & Sunday: Closed
Summerhouse Drive Library 80 Summerhouse, Bexley, Kent DA6 2EE	Tuesday & Thursday: 9am–6pm Friday: 2pm–6pm Saturday: 10am–2pm Monday, Wednesday & Sunday: Closed
<b>GRAVESHAM</b>	
Gravesham Borough Council Civic Centre and Gateway, Windmill Street, Gravesham, Kent DA12 1AU	Monday, Tuesday, Wednesday, Thursday & Friday: 9am–5pm Saturday & Sunday: Closed
Coldharbour Library Coldharbour Road, Northfleet, Gravesham, Kent DA11 8AE	Monday, Wednesday, Thursday & Friday: 9am–6pm Tuesday: 9am–8pm Saturday: 9am–5pm Sunday: Closed
Gravesham Library Windmill Street, Gravesham, Kent DA12 1BE	Monday, Tuesday, Wednesday, Thursday & Friday: 9am–6pm Saturday: 9am–5pm Sunday: Closed
Dashwood Library Dashwood Road, Northfleet, Gravesham, Kent DA11 7LY	Monday & Friday: 9:30am–1pm & 2pm–5pm Tuesday & Saturday: 2pm–5pm Wednesday, Thursday & Sunday: Closed
Higham Library Villa Road, Higham, Rochester, Kent ME3 7BS	Monday, Wednesday & Friday: 9am–1pm Tuesday & Thursday: 2pm–5:30pm Saturday: 10am–2pm Sunday: Closed
Hive House Library Hive House, 10-11 The Hive, Northfleet, Gravesham, Kent DA11 9DE	Monday & Tuesday: 9am–12:30pm Thursday & Friday: 2pm–5pm Saturday: 10am–2pm Wednesday & Sunday: Closed
King's Farm Library Sun Lane, Gravesham, Kent DA12 5HR	Monday, Tuesday, Wednesday & Friday: 9am–5pm Saturday: 10am–2pm Thursday & Sunday: Closed
Marling Cross Library 266 Mackenzie Way, Gravesham, Kent DA12 5TY	Tuesday: 9:30am–1pm & 2pm–5pm Thursday: 9:30am–1pm Friday: 2pm–5pm Saturday: 2pm–4pm Monday, Wednesday & Sunday: Closed
Meopham Library Wrotham Road, Meopham, Gravesham, Kent DA13 0AH	Monday, Tuesday, Thursday & Friday: 9am–6pm Saturday: 9am–1pm Wednesday & Sunday: Closed
Riverview Park Library The Alma, Leander Drive, Gravesham, Kent DA12 4NG	Monday, Tuesday, Wednesday & Friday: 9am–6pm Saturday: 10am–2pm Thursday & Sunday: Closed

Venue	Opening hours
Vigo Library Village Hall, The Bay, Vigo, Gravesham, Kent DA13 0TD	Tuesday: 11am–1pm & 2pm–5pm Saturday: 9:30am–2:30pm Monday, Wednesday, Thursday, Friday & Sunday: Closed
<b>KENT (Maidstone)</b>	
Kent County Council County Hall, Maidstone, Kent ME14 1XQ	Monday, Tuesday, Wednesday, Thursday & Friday: 9am–5pm Saturday & Sunday: Closed
Maidstone Library Kent History and Library Centre, James Whatman Way, Maidstone, Kent ME14 1LQ	Monday, Tuesday, Wednesday & Friday: 9am–6pm Thursday: 9am–8pm Saturday: 9am–5pm Sunday: Closed
<b>SEVENOAKS</b>	
Sevenoaks Library Buckhurst Lane, Sevenoaks, Kent TN13 1LQ	Monday, Tuesday, Wednesday & Friday: 9am–6pm Thursday: 9am–8pm Saturday: 9am–5pm Sunday: Closed
<b>TONBRIDGE &amp; MALLING</b>	
Tonbridge Library 1 Avebury Avenue, Tonbridge, Kent TN9 1TG	Monday, Tuesday, Wednesday & Friday: 9am–6pm Thursday: 9am–8pm Saturday: 9am–5pm Sunday: Closed
<b>THURROCK</b>	
Grays Central Library Thameside Complex, Orsett Road, Grays, Essex RM17 5DX	Monday, Tuesday, Wednesday & Thursday: 10am–7pm Friday & Saturday: 10am–5pm Sunday: Closed
<b>LONDON BOROUGH OF BEXLEY</b>	
Central Library Townley Road, Bexleyheath DA6 7HJ	Monday, Tuesday & Wednesday: 10am–5:30pm Thursday: 10am–7pm Friday & Saturday: 10am–1pm Saturday: 1pm–5pm
<b>LONDON BOROUGH OF BROMLEY</b>	
Central Library High Street, Bromley BR1 1EX	Monday, Tuesday, Wednesday & Friday: 9:30am–6pm Thursday: 9:30am–8pm Saturday: 9:30am–5pm Sunday: Closed
<b>MEDWAY</b>	
Medway Council Gun Wharf, Dock Road, Chatham ME4 4TR	Monday, Tuesday, Wednesday, Thursday & Friday: 10am–4pm Saturday & Sunday: Closed

Project information may continue to be updated until Friday 8 May 2015 and you are therefore advised to check the website [www.londonparamount.info](http://www.londonparamount.info) and deposit locations for such updates.

Copies of the documents, plans and maps will be available on LRCH's website at [www.londonparamount.info](http://www.londonparamount.info) from Monday 27 April 2015. They can also be provided on request by emailing [consultation@londonparamount.info](mailto:consultation@londonparamount.info), by calling the Freephone number 0800 008 6765 Mondays to Fridays between 9am and 5.30pm or by writing to FREEPOST Ref: RTRB-LUUI-AGBY, London Paramount, c/o PPS Group, Sky Light City Tower, 50 Basinghall Street, London, EC2V 5DE. A reasonable copying charge will apply (up to a maximum of £300 for the full suite of documents). The documents can also be obtained on a DVD, free of charge, by contacting LRCH as detailed here.

LRCH is consulting on the proposed application. Any representations on the proposals should be made in writing to "FREEPOST Ref: RTRB-LUUI-AGBY, London Paramount, c/o PPS Group, Sky Light City Tower, 50 Basinghall Street, London, EC2V 5DE", sent by email to [consultation@londonparamount.info](mailto:consultation@londonparamount.info), or by completing the feedback form which can be found on the LRCH's website at [www.londonparamount.info](http://www.londonparamount.info). The deadline for receiving responses is Friday 5 June 2015. Please quote "London Paramount Entertainment Resort Order" in any correspondence.

LRCH requests that responses state the grounds of representation, indicate who is making it, and provide an address to which any correspondence relating to the representation may be sent.

We may be required to make copies of representations available to the Secretary of State. We will, however, request that personal details are not placed on the public record. Personal details will be held securely in accordance with the Data Protection Act 1998 and will be used solely in connection with the consultation process and the development of the Project and, except as noted above, will not be disclosed to any third parties.

Bircham Dyson Bell LLP  
Solicitors and Parliamentary Agents acting for LRCH  
50 Broadway, London SW1H 0BL  
12 April 2015



Please recycle  
your KM Group  
newspapers



... and help us make the best use of forest fibres. The recycled paper content of UK newspapers in 2010 was 77.4%. Help us to increase this!

together we make a difference





**Andrew Lee & Co**  
Property Lawyers  
Andrew Lee Property Lawyers  
will Help you to Buy



www.alee-propertylawyers.co.uk  
email info@alee.com  
01622 750101  
Find us on  

**90 BULBS FOR EVERY READER**



**WORTH £29.56**  
Just pay postage

TURN TO WHAT'S ON PAGE

**THE BIG SURVEY RESULTS**



**WE REVEAL THE ISSUES THAT YOU TOLD US ARE IMPORTANT TO YOU** SEE PAGES 39-50

**WIN A TEX-MEX FIESTA FOR 8 PEOPLE** SEE WHAT'S ON PAGE 30

**INSIDE**

**PRAYERS**  
Vicar suffers brain bleed



PAGE 3

**VAN PURSUIT**  
Missiles thrown at police officer



PAGE 7

**SHOP ACTION**  
No energy drink for under 16s



PAGE 8

**DIRECT DOUBT**  
Card problems mount at Aldi



PAGE 13

**McMuddle**



McDonald's has got in a bit of a McMuddle after erecting a 24-hour opening sign without being granted a licence to operate around the clock.

The global fast food brand is near completion on a purpose-built restaurant and drive-thru on Tonbridge Road, Maidstone.

But the first takeaway on the menu will be to remove the erroneous sign stating it will be open all hours.

Full story page 5

<p><b>The Mote Park Veterinary Group</b></p>  <p>www.moteparkvetgroup.co.uk</p>	<p><b>VOUCHER!</b></p> <p><b>FREE puppy &amp; kitten vaccines</b></p> <p>Valid only with this voucher until 01/05/15 at Mote Park location only, when year two booster pre-paid. One voucher per household. Phone for full terms and conditions.</p> <p><b>Mote Park Veterinary Surgery</b> Northumberland Road, ME15 7LW Tel: 01622 758737</p> 	<p><b>VOUCHER!</b></p> <p><b>IDChip your pet for £5.99</b></p> <p>Valid only with this voucher until 01/05/15 at Kingshill location only. One voucher per household whilst stocks last. Phone for other terms and conditions.</p> <p><b>Kingshill Veterinary Clinic</b> Kingshill, West Malling, ME19 4DA Tel: 01732 522333</p> 	<p><b>VOUCHER!</b></p> <p><b>Neuter your male cat for £19.99</b></p> <p>Valid only with this voucher until 01/05/15 at Harrietsham location only. One voucher per household. Phone for full terms and conditions.</p> <p><b>Harrietsham Veterinary Clinic</b> A20 Harrietsham, ME17 1AB Tel: 01622 858666</p> 	<p><b>VOUCHER!</b></p> <p><b>Neuter your female cat for £29.99</b></p> <p>Valid only with this voucher until 01/05/15 at SittiVets location only. One voucher per household. Limited surgery slots available daily - phone now to reserve and for full terms and conditions.</p> <p><b>SittiVets Veterinary Surgery</b> Castle Road, Sittingbourne, ME10 3TD Tel: 01795 474900</p> 
---	---	---	---	--



**LONDON RESORT COMPANY HOLDINGS LTD**

**SECTION 48, PLANNING ACT 2008**

**REGULATION 4, INFRASTRUCTURE PLANNING (APPLICATIONS: PRESCRIBED FORMS AND PROCEDURE) REGULATIONS 2009**

**LONDON PARAMOUNT ENTERTAINMENT RESORT DEVELOPMENT CONSENT ORDER**

**NOTICE PUBLICISING A PROPOSED APPLICATION FOR A DEVELOPMENT CONSENT ORDER ("DCO")**

Notice is hereby given that London Resort Company Holdings Ltd ("LRCH") of 17 Albemarle Street, London W1S 4HP intends to apply to the Secretary of State for Communities and Local Government under section 37 of the Planning Act 2008 for the above mentioned DCO ("the proposed application").

The proposed application for the London Paramount Entertainment Resort project ("the Resort") which will be located on the Swanscombe Peninsula in the County of Kent, in the District of Dartford and the District of Gravesham, will be a nationally significant visitor attraction and leisure resort comprising a leisure core up to 50 ha in area, themed around the films and television programmes of Paramount Pictures, and currently including (but not limited to) the British Broadcasting Corporation (BBC) and Aardman Animations.

The Resort core will include—

- events spaces, rides, attractions, day-time and night-time shows and parades, entertainment venues, cinemas, theatres and nightclubs;
  - ancillary food and beverage, retail, back of house/service and guest service facilities;
  - hotel rooms as a part of a total provision of up to 5,000 hotel bedrooms across the Resort development as a whole;
  - associated car parking as part of a maximum provision of 14,000 spaces; and
  - hard and soft landscaping including amenity water features such as ponds and canals.
- The proposed Resort development also includes the following principal elements—
- the creation of a visitor entrance square;
  - the creation of a range of hotels, a water park and a transport interchange at the visitor entrance square;
  - the construction of a new dual carriageway access road approximately 2.8 kilometres in length, between the A2(T)/B259 junction, and the Resort development area;
  - the provision of a transport interchange at Ebbsfleet International Station, pedestrian facilities from London Road to the River Thames; pedestrian facilities and cycle track route along the Thames Path route; enhancements to the existing jetty on the River Thames to facilitate access by boat for the delivery of construction materials, and the creation of a floating pontoon for embarkment and disembarkment of visitors;
  - the creation of a conference and exhibition event space;
  - the creation of a creative business hub and office space for the creative industries;
  - the creation of a green zone to include areas of environmental enhancement and wildlife habitat creation beside the River Thames;
  - the provision of waste management, power generation and power distribution facilities;
  - the enhancement of flood defence works; and
  - the provision of ancillary emergency and security features.

The proposed Resort is "EIA development" for the purposes of the Infrastructure Planning (Environmental Impact Assessment) Regulations 2009. This means that the proposed works constitute development for which an Environmental Impact Assessment would be required. LRCH's proposed application for a DCO will, therefore, be accompanied by an Environmental Statement, containing the information about the environmental effects of the proposed development.

The documents, plans and maps showing the nature and location of the proposed application, including information so far compiled about environmental impacts (preliminary environmental information), may be inspected free of charge from **Monday 27 April 2015 to Friday 5 June 2015** at the locations and times set out below:

Venue	Opening hours
<b>DARTFORD</b>	
Dartford Council Offices Civic Centre, Home Gardens, Dartford, Kent DA1 1DR	Monday, Tuesday, Wednesday & Thursday: 8:45am–5:15pm Friday: 8:45am–4:45pm Saturday & Sunday: Closed
Swanscombe and Greenhithe Town Council Council Offices, The Grove, Kent DA10 0GA	Monday, Tuesday, Thursday & Friday: 9:30am– 1pm & 1:45pm–4pm Wednesday, Saturday & Sunday: Closed
Community Café Old Fire Station Café, Church Road, Swanscombe, Kent DA10 0HF	Monday, Tuesday, Wednesday, Thursday & Friday: 10am–2pm Saturday & Sunday: Closed
Greenhithe Library London Road, Greenhithe, Kent DA9 9EJ	Tuesday & Thursday: 1pm–5:30pm Saturday 9:30am–12:30pm Monday, Wednesday, Friday & Sunday: Closed
Swan Valley Library Swanscombe Library Discovery Centre, Ebbsfleet Academy, Southfleet Road, Swanscombe, Kent, DA10 0BZ	Monday, Tuesday & Saturday: 10am–2pm Wednesday & Friday: 1pm–5pm Thursday & Sunday: Closed

Venue	Opening hours
Longfield Library 49 Main Road, Longfield, Kent DA3 7QT	Tuesday & Friday: 1pm–6pm Wednesday & Thursday: 9am–1pm Saturday 10am–2pm Monday & Sunday: Closed
Dartford Library Central Park, Market Street, Dartford, Kent DA1 1EU	Monday, Tuesday, Wednesday, Thursday & Friday: 8:30am–6pm Saturday: 9am–5pm Sunday: Closed
Temple Hill Library Temple Hill Square, Dartford, Kent DA1 5HY	Monday, Tuesday, Thursday & Friday: 9am–6pm Saturday: 10am–2pm Wednesday & Sunday: Closed
Ashen Drive Library Ashen Drive, Dartford, Kent DA1 3LY	Monday & Thursday: 2pm–6pm Tuesday & Friday: 9am–1pm Saturday: 10am–12pm Wednesday & Sunday: Closed
Fleetdown Library Swaledale Road, Dartford, Kent DA2 6JZ	Tuesday, Thursday & Friday: 9:30am–5:30pm Wednesday: 1:30pm–5:30pm Saturday: 10am–12pm Monday & Sunday: Closed
Sutton-at-Hone Library Main Road, Sutton-At-Hone, Dartford, Kent DA4 9HQ	Monday & Friday: 10am–6pm Tuesday & Saturday: 10am–2pm Wednesday, Thursday & Sunday: Closed
Summerhouse Drive Library 80 Summerhouse, Bexley, Kent DA6 2EE	Tuesday & Thursday: 9am–6pm Friday: 2pm–6pm Saturday: 10am–2pm Monday, Wednesday & Sunday: Closed
<b>GRAVESHAM</b>	
Gravesham Borough Council Civic Centre and Gateway, Windmill Street, Gravesham, Kent DA12 1AU	Monday, Tuesday, Wednesday, Thursday & Friday: 9am–5pm Saturday & Sunday: Closed
Coldharbour Library Coldharbour Road, Northfleet, Gravesham, Kent DA11 8AE	Monday, Wednesday, Thursday & Friday: 9am–6pm Tuesday: 9am–8pm Saturday: 9am–5pm Sunday: Closed
Gravesham Library Windmill Street, Gravesham, Kent DA12 1BE	Monday, Tuesday, Wednesday, Thursday & Friday: 9am–6pm Saturday: 9am–5pm Sunday: Closed
Dashwood Library Dashwood Road, Northfleet, Gravesham, Kent DA11 7LY	Monday & Friday: 9:30am–1pm & 2pm–5pm Tuesday & Saturday: 2pm–5pm Wednesday, Thursday & Sunday: Closed
Higham Library Villa Road, Higham, Rochester, Kent ME3 7BS	Monday, Wednesday & Friday: 9am–1pm Tuesday & Thursday: 2pm–5:30pm Saturday: 10am–2pm Sunday: Closed
Hive House Library Hive House, 10-11 The Hive, Northfleet, Gravesham, Kent DA11 9DE	Monday & Tuesday: 9am–12:30pm Thursday & Friday: 2pm–5pm Saturday: 10am–2pm Wednesday & Sunday: Closed
King's Farm Library Sun Lane, Gravesham, Kent DA12 5HR	Monday, Tuesday, Wednesday & Friday: 9am–5pm Saturday: 10am–2pm Thursday & Sunday: Closed
Marling Cross Library 266 Mackenzie Way, Gravesham, Kent DA12 5TY	Tuesday: 9:30am–1pm & 2pm–5pm Thursday: 9:30am–1pm Friday: 2pm–5pm Saturday: 2pm–4pm Monday, Wednesday & Sunday: Closed
Meopham Library Wrotham Road, Meopham, Gravesham, Kent DA13 0AH	Monday, Tuesday, Thursday & Friday: 9am–6pm Saturday: 9am–1pm Wednesday & Sunday: Closed
Riverview Park Library The Alma, Leander Drive, Gravesham, Kent DA12 4NG	Monday, Tuesday, Wednesday & Friday: 9am–6pm Saturday: 10am–2pm Thursday & Sunday: Closed

Venue	Opening hours
Vigo Library Village Hall, The Bay, Vigo, Gravesend, Kent DA13 0TD	Tuesday: 11am–1pm & 2pm–5pm Saturday: 9:30am–2:30pm Monday, Wednesday, Thursday, Friday & Sunday: Closed
<b>KENT (Maidstone)</b>	
Kent County Council County Hall, Maidstone, Kent ME14 1XQ	Monday, Tuesday, Wednesday, Thursday & Friday: 9am–5pm Saturday & Sunday: Closed
Maidstone Library Kent History and Library Centre, James Whatman Way, Maidstone, Kent ME14 1LQ	Monday, Tuesday, Wednesday & Friday: 9am–6pm Thursday: 9am–8pm Saturday: 9am–5pm Sunday: Closed
<b>SEVENOAKS</b>	
Sevenoaks Library Buckhurst Lane, Sevenoaks, Kent TN13 1LQ	Monday, Tuesday, Wednesday & Friday: 9am–6pm Thursday: 9am–8pm Saturday: 9am–5pm Sunday: Closed
<b>TONBRIDGE &amp; MALLING</b>	
Tonbridge Library 1 Avebury Avenue, Tonbridge, Kent TN9 1TG	Monday, Tuesday, Wednesday & Friday: 9am–6pm Thursday: 9am–8pm Saturday: 9am–5pm Sunday: Closed
<b>THURROCK</b>	
Grays Central Library Thameside Complex, Orsett Road, Grays, Essex RM17 5DX	Monday, Tuesday, Wednesday & Thursday: 10am–7pm Friday & Saturday: 10am–5pm Sunday: Closed
<b>LONDON BOROUGH OF BEXLEY</b>	
Central Library Townley Road, Bexleyheath DA6 7HJ	Monday, Tuesday & Wednesday: 10am–5.30pm Thursday: 10am–7pm Friday & Saturday: 10am–1pm Saturday: 1pm–5pm
<b>LONDON BOROUGH OF BROMLEY</b>	
Central Library High Street, Bromley BR1 1EX	Monday, Tuesday, Wednesday & Friday: 9.30am–6pm Thursday: 9.30am–8pm Saturday: 9.30am–5pm Sunday: Closed
<b>MEDWAY</b>	
Medway Council Gun Wharf, Dock Road, Chatham ME4 4TR	Monday, Tuesday, Wednesday, Thursday & Friday: 10am–4pm Saturday & Sunday: Closed

Project information may continue to be updated until Friday 8 May 2015 and you are therefore advised to check the website [www.londonparamount.info](http://www.londonparamount.info) and deposit locations for such updates.

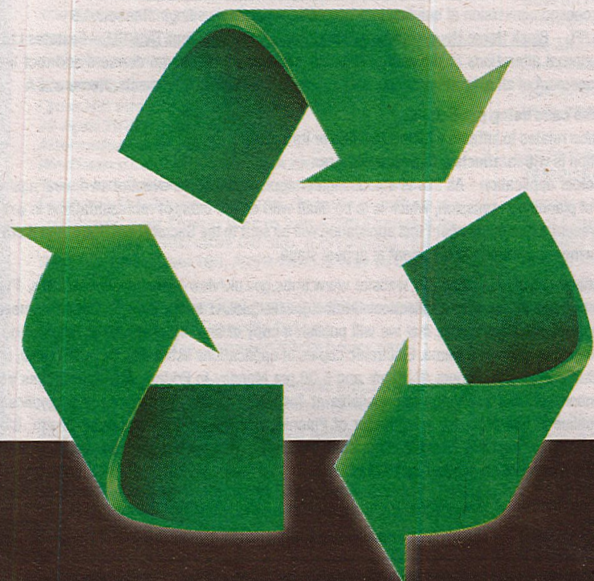
Copies of the documents, plans and maps will be available on LRCH's website at [www.londonparamount.info](http://www.londonparamount.info) from Monday 27 April 2015. They can also be provided on request by emailing [consultation@londonparamount.info](mailto:consultation@londonparamount.info), by calling the Freephone number 0800 008 6765 Mondays to Fridays between 9am and 5.30pm or by writing to FREEPOST Ref: RTRB-LUJ-AGBY, London Paramount, c/o PPS Group, Sky Light City Tower, 50 Basinghall Street, London, EC2V 5DE. A reasonable copying charge will apply (up to a maximum of £300 for the full suite of documents). The documents can also be obtained on a DVD, free of charge, by contacting LRCH as detailed here.

LRCH is consulting on the proposed application. Any representations on the proposals should be made in writing to "FREEPOST Ref: RTRB-LUJ-AGBY, London Paramount, c/o PPS Group, Sky Light City Tower, 50 Basinghall Street, London, EC2V 5DE", sent by email to [consultation@londonparamount.info](mailto:consultation@londonparamount.info), or by completing the feedback form which can be found on the LRCH's website at [www.londonparamount.info](http://www.londonparamount.info). The deadline for receiving responses is Friday 5 June 2015. Please quote "London Paramount Entertainment Resort Order" in any correspondence.

LRCH requests that responses state the grounds of representation, indicate who is making it, and provide an address to which any correspondence relating to the representation may be sent.

We may be required to make copies of representations available to the Secretary of State. We will, however, request that personal details are not placed on the public record. Personal details will be held securely in accordance with the Data Protection Act 1998 and will be used solely in connection with the consultation process and the development of the Project and, except as noted above, will not be disclosed to any third parties.

Bircham Dyson Bell LLP  
Solicitors and Parliamentary Agents acting for LRCH  
50 Broadway, London SW1H 0BL  
12 April 2015



Please recycle  
your KM Group  
newspapers



... and help us make the best use of forest fibres. The recycled paper content of UK newspapers in 2010 was 77.4%. Help us to increase this!

together we make a difference



CMYK

W\_P03\_C1P\_3\_1S





KENT UK's best selling weekday weekly newspaper MAIDSTONE  
**MESSENGER**

www.kentonline.co.uk/maidstone

Together we make a difference

kmfm 105.6

Friday, April 24, 2015 £1.10

# title glory

THE UNITED  
CLUB



special souvenir edition

winning season - see pages 3, 82-87

From top: Maidstone's Shane Huke celebrates with a fan, the supporters carry Ben Greenhalgh off the pitch and skipper Steve Watt with club ambassador Les Apps

FM3762391, FM3762387, FM3762378 Buy these pictures from kentonline.co.uk





# Public Sector

You can also find the latest jobs online: [www.jobs24.co.uk/kent](http://www.jobs24.co.uk/kent)

KOSMEDIA

Telephone: 01233 653465

Email: [appointments@kosmedia.co.uk](mailto:appointments@kosmedia.co.uk)

Online: [www.jobs24.co.uk/kent](http://www.jobs24.co.uk/kent)

## LEGAL AND PUBLIC NOTICES

### LONDON RESORT COMPANY HOLDINGS LTD

#### SECTION 48, PLANNING ACT 2008

#### REGULATION 4, INFRASTRUCTURE PLANNING (APPLICATIONS: PRESCRIBED FORMS AND PROCEDURE) REGULATIONS 2009

#### LONDON PARAMOUNT ENTERTAINMENT RESORT DEVELOPMENT CONSENT ORDER

#### NOTICE PUBLICISING A PROPOSED APPLICATION FOR A DEVELOPMENT CONSENT ORDER ("DCO")

Notice is hereby given that London Resort Company Holdings Ltd ("LRCH") of 17 Albemarle Street, London W1S 4HP intends to apply to the Secretary of State for Communities and Local Government under section 37 of the Planning Act 2008 for the above mentioned DCO ("the proposed application").

The proposed application for the London Paramount Entertainment Resort project ("the Resort") which will be located on the Swanscombe Peninsula in the County of Kent, in the District of Dartford and the District of Gravesham, will be a nationally significant visitor attraction and leisure resort comprising a leisure core up to 50 ha in area, themed around the films and television programmes of Paramount Pictures, and currently including (but not limited to) the British Broadcasting Corporation (BBC) and Aardman Animations.

The Resort core will include—

- events spaces, rides, attractions, day-time and night-time shows and parades, entertainment venues, cinemas, theatres and nightclubs;
- ancillary food and beverage, retail, back of house/service and guest service facilities;
- hotel rooms as a part of a total provision of up to 5,000 hotel bedrooms across the Resort development as a whole;
- associated car parking as part of a maximum provision of 14,000 spaces; and
- hard and soft landscaping including amenity water features such as ponds and canals.

The proposed Resort development also includes the following principal elements—

- the creation of a visitor entrance square;
- the creation of a range of hotels, a water park and a transport interchange at the visitor entrance square;
- the construction of a new dual carriageway access road approximately 2.8 kilometres in length, between the A2(T)/B259 junction, and the Resort development area;
- the provision of a transport interchange at Ebbsfleet International Station, pedestrian facilities from London Road to the River Thames; pedestrian facilities and cycle track route along the Thames Path route; enhancements to the existing jetty on the River Thames to facilitate access by boat for the delivery of construction materials, and the creation of a floating pontoon for embarkment and disembarkment of visitors;
- the creation of a conference and exhibition event space;
- the creation of a creative business hub and office space for the creative industries;
- the creation of a green zone to include areas of environmental enhancement and wildlife habitat creation beside the River Thames;
- the provision of waste management, power generation and power distribution facilities;
- the enhancement of flood defence works; and
- the provision of ancillary emergency and security features.

The proposed Resort is "EIA development" for the purposes of the Infrastructure Planning (Environmental Impact Assessment) Regulations 2009. This means that the proposed works constitute development for which an Environmental Impact Assessment would be required. LRCH's proposed application for a DCO will, therefore, be accompanied by an Environmental Statement, containing the information about the environmental effects of the proposed development.

The documents, plans and maps showing the nature and location of the proposed application, including information so far compiled about environmental impacts (preliminary environmental information), may be inspected free of charge from **Monday 27 April 2015 to Friday 5 June 2015** at the locations and times set out below:

Venue	Opening hours
<b>DARTFORD</b>	
Dartford Council Offices Civic Centre, Home Gardens, Dartford, Kent DA1 1DR	Monday, Tuesday, Wednesday & Thursday: 8:45am–5:15pm Friday: 8:45am–4:45pm Saturday & Sunday: Closed
Swanscombe and Greenhithe Town Council Council Offices, The Grove, Kent DA10 0GA	Monday, Tuesday, Thursday & Friday: 9:30am–1pm & 1:45pm–4pm Wednesday, Saturday & Sunday: Closed
Community Café Old Fire Station Café, Church Road, Swanscombe, Kent DA10 0HF	Monday, Tuesday, Wednesday, Thursday & Friday: 10am–2pm Saturday & Sunday: Closed
Greenhithe Library London Road, Greenhithe, Kent DA9 9EJ	Tuesday & Thursday: 1pm–5:30pm Saturday 9:30am–12:30pm Monday, Wednesday, Friday & Sunday: Closed
Swan Valley Library Swanscombe Library Discovery Centre, Ebbsfleet Academy, Southfleet Road, Swanscombe, Kent, DA10 0BZ	Monday, Tuesday & Saturday: 10am–2pm Wednesday & Friday: 1pm–5pm Thursday & Sunday: Closed

Venue	Opening hours
Longfield Library 49 Main Road, Longfield, Kent DA3 7QT	Tuesday & Friday: 1pm–6pm Wednesday & Thursday: 9am–1pm Saturday 10am–2pm Monday & Sunday: Closed
Dartford Library Central Park, Market Street, Dartford, Kent DA1 1EU	Monday, Tuesday, Wednesday, Thursday & Friday: 8:30am–6pm Saturday: 9am–5pm Sunday: Closed
Temple Hill Library Temple Hill Square, Dartford, Kent DA1 5HY	Monday, Tuesday, Thursday & Friday: 9am–6pm Saturday: 10am–2pm Wednesday & Sunday: Closed
Ashen Drive Library Ashen Drive, Dartford, Kent DA1 3LY	Monday & Thursday: 2pm–6pm Tuesday & Friday: 9am–1pm Saturday: 10am–12pm Wednesday & Sunday: Closed
Fleetdown Library Swaledale Road, Dartford, Kent DA2 6JZ	Tuesday, Thursday & Friday: 9:30am–5:30pm Wednesday: 1:30pm–5:30pm Saturday: 10am–12pm Monday & Sunday: Closed
Sutton-at-Hone Library Main Road, Sutton-At-Hone, Dartford, Kent DA4 9HQ	Monday & Friday: 10am–6pm Tuesday & Saturday: 10am–2pm Wednesday, Thursday & Sunday: Closed
Summerhouse Drive Library 80 Summerhouse, Bexley, Kent DA6 2EE	Tuesday & Thursday: 9am–6pm Friday: 2pm–6pm Saturday: 10am–2pm Monday, Wednesday & Sunday: Closed
<b>GRAVESHAM</b>	
Gravesham Borough Council Civic Centre and Gateway, Windmill Street, Gravesham, Kent DA12 1AU	Monday, Tuesday, Wednesday, Thursday & Friday: 9am–5pm Saturday & Sunday: Closed
Coldharbour Library Coldharbour Road, Northfleet, Gravesham, Kent DA11 8AE	Monday, Wednesday, Thursday & Friday: 9am–6pm Tuesday: 9am–8pm Saturday: 9am–5pm Sunday: Closed
Gravesham Library Windmill Street, Gravesham, Kent DA12 1BE	Monday, Tuesday, Wednesday, Thursday & Friday: 9am–6pm Saturday: 9am–5pm Sunday: Closed
Dashwood Library Dashwood Road, Northfleet, Gravesham, Kent DA11 7LY	Monday & Friday: 9:30am–1pm & 2pm–5pm Tuesday & Saturday: 2pm–5pm Wednesday, Thursday & Sunday: Closed
Higham Library Villa Road, Higham, Rochester, Kent ME3 7BS	Monday, Wednesday & Friday: 9am–1pm Tuesday & Thursday: 2pm–5:30pm Saturday: 10am–2pm Sunday: Closed
Hive House Library Hive House, 10-11 The Hive, Northfleet, Gravesham, Kent DA11 9DE	Monday & Tuesday: 9am–12:30pm Thursday & Friday: 2pm–5pm Saturday: 10am–2pm Wednesday & Sunday: Closed
King's Farm Library Sun Lane, Gravesham, Kent DA12 5HR	Monday, Tuesday, Wednesday & Friday: 9am–5pm Saturday: 10am–2pm Thursday & Sunday: Closed
Marling Cross Library 266 Mackenzie Way, Gravesham, Kent DA12 5TY	Tuesday: 9:30am–1pm & 2pm–5pm Thursday: 9:30am–1pm Friday: 2pm–5pm Saturday: 2pm–4pm Monday, Wednesday & Sunday: Closed
Meopham Library Wrotham Road, Meopham, Gravesham, Kent DA13 0AH	Monday, Tuesday, Thursday & Friday: 9am–6pm Saturday: 9am–1pm Wednesday & Sunday: Closed
Riverview Park Library The Alma, Leander Drive, Gravesham, Kent DA12 4NG	Monday, Tuesday, Wednesday & Friday: 9am–6pm Saturday: 10am–2pm Thursday & Sunday: Closed

Venue	Opening hours
Vigo Library Village Hall, The Bay, Vigo, Gravesend, Kent DA13 0TD	Tuesday: 11am–1pm & 2pm–5pm Saturday: 9:30am–2:30pm Monday, Wednesday, Thursday, Friday & Sunday: Closed
<b>KENT (Maidstone)</b>	
Kent County Council County Hall, Maidstone, Kent ME14 1XQ	Monday, Tuesday, Wednesday, Thursday & Friday: 9am–5pm Saturday & Sunday: Closed
Maidstone Library Kent History and Library Centre, James Whatman Way, Maidstone, Kent ME14 1LQ	Monday, Tuesday, Wednesday & Friday: 9am–6pm Thursday: 9am–8pm Saturday: 9am–5pm Sunday: Closed
<b>SEVENOAKS</b>	
Sevenoaks Library Buckhurst Lane, Sevenoaks, Kent TN13 1LQ	Monday, Tuesday, Wednesday & Friday: 9am–6pm Thursday: 9am–8pm Saturday: 9am–5pm Sunday: Closed
<b>TONBRIDGE &amp; MALLING</b>	
Tonbridge Library 1 Avebury Avenue, Tonbridge, Kent TN9 1TG	Monday, Tuesday, Wednesday & Friday: 9am–6pm Thursday: 9am–8pm Saturday: 9am–5pm Sunday: Closed
<b>THURROCK</b>	
Grays Central Library Thameside Complex, Orsett Road, Grays, Essex RM17 5DX	Monday, Tuesday, Wednesday & Thursday: 10am–7pm Friday & Saturday: 10am–5pm Sunday: Closed
<b>LONDON BOROUGH OF BEXLEY</b>	
Central Library Townley Road, Bexleyheath DA6 7HJ	Monday, Tuesday & Wednesday: 10am–5.30pm Thursday: 10am–7pm Friday & Saturday: 10am–1pm Saturday: 1pm–5pm
<b>LONDON BOROUGH OF BROMLEY</b>	
Central Library High Street, Bromley BR1 1EX	Monday, Tuesday, Wednesday & Friday: 9.30am–6pm Thursday: 9.30am–8pm Saturday: 9.30am–5pm Sunday: Closed
<b>MEDWAY</b>	
Medway Council Gun Wharf, Dock Road, Chatham ME4 4TR	Monday, Tuesday, Wednesday, Thursday & Friday: 10am–4pm Saturday & Sunday: Closed

Project information may continue to be updated until Friday 8 May 2015 and you are therefore advised to check the website [www.londonparamount.info](http://www.londonparamount.info) and deposit locations for such updates.

Copies of the documents, plans and maps will be available on LRCH's website at [www.londonparamount.info](http://www.londonparamount.info) from Monday 27 April 2015. They can also be provided on request by emailing [consultation@londonparamount.info](mailto:consultation@londonparamount.info), by calling the Freephone number 0800 008 6765 Mondays to Fridays between 9am and 5.30pm or by writing to FREEPOST Ref: RTRB-LUJ-AGBY, London Paramount, c/o PPS Group, Sky Light City Tower, 50 Basinghall Street, London, EC2V 5DE. A reasonable copying charge will apply (up to a maximum of £300 for the full suite of documents). The documents can also be obtained on a DVD, free of charge, by contacting LRCH as detailed here.

LRCH is consulting on the proposed application. Any representations on the proposals should be made in writing to "FREEPOST Ref: RTRB-LUJ-AGBY, London Paramount, c/o PPS Group, Sky Light City Tower, 50 Basinghall Street, London, EC2V 5DE", sent by email to [consultation@londonparamount.info](mailto:consultation@londonparamount.info), or by completing the feedback form which can be found on the LRCH's website at [www.londonparamount.info](http://www.londonparamount.info). The deadline for receiving responses is Friday 5 June 2015. Please quote "London Paramount Entertainment Resort Order" in any correspondence.

LRCH requests that responses state the grounds of representation, indicate who is making it, and provide an address to which any correspondence relating to the representation may be sent.

We may be required to make copies of representations available to the Secretary of State. We will, however, request that personal details are not placed on the public record. Personal details will be held securely in accordance with the Data Protection Act 1998 and will be used solely in connection with the consultation process and the development of the Project and, except as noted above, will not be disclosed to any third parties.

Bircham Dyson Bell LLP  
Solicitors and Parliamentary Agents acting for LRCH  
50 Broadway, London SW1H 0BL

12 April 2015

# To advertise your public notice here

PLEASE CALL

## 01233 653461

email: [appointments@kosmedia.co.uk](mailto:appointments@kosmedia.co.uk)



FREE

# Kent on Sunday

www.kentnews.co.uk April 12, 2015

WEEKLY FREE NEWSPAPER OF THE YEAR

North&West edition No 655

EDF ENERGY London and South of England Media Awards



## HEALTH

### The average age is rising

How will county deal with older population?

## HISTORY

### A few words with The Few

Recalling the bravery of fighter pilot heroes

## LEISURE

### New take on seaside fun

Lifting the lid on what Dreamland will offer

## POLITICS

# In the balance

Poll shows many electors have yet to decide who to vote for...

PEOPLE TRUST  
**Hidsons**

Your local Kia dealer  
Find us between Ebbsfleet International Station  
and The Fleet

[www.hidsons.co.uk/kia](http://www.hidsons.co.uk/kia)



**TO ADVERTISE:**

TELEPHONE: **01233 653461**

EMAIL: **appointments@kosmedia.co.uk**

ONLINE: **www.jobs24.co.uk/kent**



**LONDON RESORT COMPANY HOLDINGS LTD**

**SECTION 48, PLANNING ACT 2008**

**REGULATION 4, INFRASTRUCTURE PLANNING (APPLICATIONS: PRESCRIBED FORMS AND PROCEDURE) REGULATIONS 2009**

**LONDON PARAMOUNT ENTERTAINMENT RESORT DEVELOPMENT CONSENT ORDER**

**NOTICE PUBLICISING A PROPOSED APPLICATION FOR A DEVELOPMENT CONSENT ORDER ("DCO")**

Notice is hereby given that London Resort Company Holdings Ltd ("LRCH") of 17 Albemarle Street, London W1S 4HP intends to apply to the Secretary of State for Communities and Local Government under section 37 of the Planning Act 2008 for the above mentioned DCO ("the proposed application").

The proposed application for the London Paramount Entertainment Resort project ("the Resort") which will be located on the Swanscombe Peninsula in the County of Kent, in the District of Dartford and the District of Gravesend, will be a nationally significant visitor attraction and leisure resort comprising a leisure core up to 50 ha in area, themed around the films and television programmes of Paramount Pictures, and currently including (but not limited to) the British Broadcasting Corporation (BBC) and Aardman Animations.

The Resort core will include—

- events spaces, rides, attractions, day-time shows and parades, entertainment venues, cinemas, theatres and nightclubs;
- ancillary food and beverage, retail, back of house/service and guest service facilities;
- hotel rooms as a part of a total provision of up to 5,000 hotel bedrooms across the Resort development as a whole;
- associated car parking as part of a maximum provision of 14,000 spaces; and
- hard and soft landscaping including amenity water features such as ponds and canals.

The proposed Resort development also includes the following principal elements—

- the creation of a visitor entrance square;
- the creation of a range of hotels, a water park and a transport interchange at the visitor entrance square;
- the construction of a new dual carriageway access road approximately 2.8 kilometres in length, between the A2(T)/B259 junction, and the Resort development area;
- the provision of a transport interchange at Ebbsfleet International Station, pedestrian facilities from London Road to the River Thames; pedestrian facilities and cycle track route along the Thames Path route; enhancements to the existing jetty on the River Thames to facilitate access by boat for the delivery of construction materials, and the creation of a floating pontoon for embarkment and disembarkment of visitors;
- the creation of a conference and exhibition event space;
- the creation of a creative business hub and office space for the creative industries;
- the creation of a green zone to include areas of environmental enhancement and wildlife habitat creation beside the River Thames;
- the provision of waste management, power generation and power distribution facilities;
- the enhancement of flood defence works; and
- the provision of ancillary emergency and security features.

The proposed Resort is "EIA development" for the purposes of the Infrastructure Planning (Environmental Impact Assessment) Regulations 2009. This means that the proposed works constitute development for which an Environmental Impact Assessment would be required. LRCH's proposed application for a DCO will, therefore, be accompanied by an Environmental Statement, containing the information about the environmental effects of the proposed development.

The documents, plans and maps showing the nature and location of the proposed application, including information so far compiled about environmental impacts (preliminary environmental information), may be inspected free of charge from **Monday 27 April 2015 to Friday 5 June 2015** at the locations and times set out below:

Venue	Opening hours
<b>DARTFORD</b>	
Dartford Council Offices Civic Centre, Home Gardens, Dartford, Kent DA1 1DR	Monday, Tuesday, Wednesday & Thursday: 8:45am–5:15pm Friday: 8:45am–4:45pm Saturday & Sunday: Closed
Swanscombe and Greenhithe Town Council Council Offices, The Grove, Kent DA10 0GA	Monday, Tuesday, Thursday & Friday: 9:30am–1pm & 1:45pm–4pm Wednesday, Saturday & Sunday: Closed
Community Café Old Fire Station Café, Church Road, Swanscombe, Kent DA10 0HF	Monday, Tuesday, Wednesday, Thursday & Friday: 10am–2pm Saturday & Sunday: Closed
Greenhithe Library London Road, Greenhithe, Kent DA9 9EJ	Tuesday & Thursday: 1pm–5:30pm Saturday 9:30am–12:30pm Monday, Wednesday, Friday & Sunday: Closed
Swan Valley Library Swanscombe Library Discovery Centre, Ebbsfleet Academy, Southfleet Road, Swanscombe, Kent, DA10 0BZ	Monday, Tuesday & Saturday: 10am–2pm Wednesday & Friday: 1pm–5pm Thursday & Sunday: Closed

Venue	Opening hours
Longfield Library 49 Main Road, Longfield, Kent DA3 7QT	Tuesday & Friday: 1pm–6pm Wednesday & Thursday: 9am–1pm Saturday 10am–2pm Monday & Sunday: Closed
Dartford Library Central Park, Market Street, Dartford, Kent DA1 1EU	Monday, Tuesday, Wednesday, Thursday & Friday: 8:30am–6pm Saturday: 9am–5pm Sunday: Closed
Temple Hill Library Temple Hill Square, Dartford, Kent DA1 5HY	Monday, Tuesday, Wednesday & Friday: 9am–6pm Saturday: 10am–2pm Wednesday & Sunday: Closed
Ashen Drive Library Ashen Drive, Dartford, Kent DA1 3LY	Monday & Thursday: 2pm–6pm Tuesday & Friday: 9am–1pm Saturday: 10am–12pm Wednesday & Sunday: Closed
Fleetdown Library Swaledale Road, Dartford, Kent DA2 6JZ	Tuesday, Thursday & Friday: 9:30am–5:30pm Wednesday: 1:30pm–5:30pm Saturday: 10am–12pm Monday & Sunday: Closed
Sutton-at-Hone Library Main Road, Sutton-At-Hone, Dartford, Kent DA4 9HQ	Monday & Friday: 10am–6pm Tuesday & Saturday: 10am–2pm Wednesday, Thursday & Sunday: Closed
Summerhouse Drive Library 80 Summerhouse, Bexley, Kent DA6 2EE	Tuesday & Thursday: 9am–6pm Friday: 2pm–6pm Saturday: 10am–2pm Monday, Wednesday & Sunday: Closed
<b>GRAVESHAM</b>	
Gravesham Borough Council Civic Centre and Gateway, Windmill Street, Gravesend, Kent DA12 1AU	Monday, Tuesday, Wednesday, Thursday & Friday: 9am–5pm Saturday & Sunday: Closed
Coldharbour Library Coldharbour Road, Northfleet, Gravesend, Kent DA11 8AE	Monday, Wednesday, Thursday & Friday: 9am–6pm Tuesday: 9am–8pm Saturday: 9am–5pm Sunday: Closed
Gravesend Library Windmill Street, Gravesend, Kent DA12 1BE	Monday, Tuesday, Wednesday, Thursday & Friday: 9am–6pm Saturday: 9am–5pm Sunday: Closed
Dashwood Library Dashwood Road, Northfleet, Gravesend, Kent DA11 7LY	Monday & Friday: 9:30am–1pm & 2pm–5pm Tuesday & Saturday: 2pm–5pm Wednesday, Thursday & Sunday: Closed
Higham Library Villa Road, Higham, Rochester, Kent ME3 7BS	Monday, Wednesday & Friday: 9am–1pm Tuesday & Thursday: 2pm–5:30pm Saturday: 10am–2pm Sunday: Closed
Hive House Library Hive House, 10-11 The Hive, Northfleet, Gravesend, Kent DA11 9DE	Monday & Tuesday: 9am–12:30pm Thursday & Friday: 2pm–5pm Saturday: 10am–2pm Wednesday & Sunday: Closed
King's Farm Library Sun Lane, Gravesend, Kent DA12 5HR	Monday, Tuesday, Wednesday & Friday: 9am–5pm Saturday: 10am–2pm Thursday & Sunday: Closed
Marling Cross Library 266 Mackenzie Way, Gravesend, Kent DA12 5TY	Tuesday: 9:30am–1pm & 2pm–5pm Thursday: 9:30am–1pm Friday: 2pm–5pm Saturday: 2pm–4pm Monday, Wednesday & Sunday: Closed
Meopham Library Wrotham Road, Meopham, Gravesend, Kent DA13 0AH	Monday, Tuesday, Thursday & Friday: 9am–6pm Saturday: 9am–1pm Wednesday & Sunday: Closed
Riverview Park Library The Alma, Leander Drive, Gravesend, Kent DA12 4NG	Monday, Tuesday, Wednesday & Friday: 9am–6pm Saturday: 10am–2pm Thursday & Sunday: Closed

Venue	Opening hours
Vigo Library Village Hall, The Bay, Vigo, Gravesend, Kent DA13 0TD	Tuesday: 11am–1pm & 2pm–5pm Saturday: 9:30am–2:30pm Monday, Wednesday, Thursday, Friday & Sunday: Closed
<b>KENT (Maidstone)</b>	
Kent County Council County Hall, Maidstone, Kent ME14 1XQ	Monday, Tuesday, Wednesday, Thursday & Friday: 9am–5pm Saturday & Sunday: Closed
Maidstone Library Kent History and Library Centre, James Whatman Way, Maidstone, Kent ME14 1LQ	Monday, Tuesday, Wednesday & Friday: 9am–6pm Thursday: 9am–8pm Saturday: 9am–5pm Sunday: Closed
<b>SEVENOAKS</b>	
Sevenoaks Library Buckhurst Lane, Sevenoaks, Kent TN13 1LQ	Monday, Tuesday, Wednesday & Friday: 9am–6pm Thursday: 9am–8pm Saturday: 9am–5pm Sunday: Closed
<b>TONBRIDGE &amp; MALLING</b>	
Tonbridge Library 1 Avebury Avenue, Tonbridge, Kent TN9 1TG	Monday, Tuesday, Wednesday & Friday: 9am–6pm Thursday: 9am–8pm Saturday: 9am–5pm Sunday: Closed
<b>THURROCK</b>	
Grays Central Library Thameside Complex, Orsett Road, Grays, Essex RM17 5DX	Monday, Tuesday, Wednesday & Thursday: 10am–7pm Friday & Saturday: 10am–5pm Sunday: Closed
<b>LONDON BOROUGH OF BEXLEY</b>	
Central Library Townley Road, Bexleyheath DA6 7HJ	Monday, Tuesday & Wednesday: 10am–5.30pm Thursday: 10am–7pm Friday & Saturday: 10am–1pm Saturday: 1pm–5pm
<b>LONDON BOROUGH OF BROMLEY</b>	
Central Library High Street, Bromley BR1 1EX	Monday, Tuesday, Wednesday & Friday: 9.30am–6pm Thursday: 9.30am–8pm Saturday: 9.30am–5pm Sunday: Closed
<b>MEDWAY</b>	
Medway Council Gun Wharf, Dock Road, Chatham ME4 4TR	Monday, Tuesday, Wednesday, Thursday & Friday: 10am–4pm Saturday & Sunday: Closed

Project information may continue to be updated until Friday 8 May 2015 and you are therefore advised to check the website [www.londonparamount.info](http://www.londonparamount.info) and deposit locations for such updates.

Copies of the documents, plans and maps will be available on LRCH's website at [www.londonparamount.info](http://www.londonparamount.info) from Monday 27 April 2015. They can also be provided on request by emailing [consultation@londonparamount.info](mailto:consultation@londonparamount.info), by calling the Freephone number 0800 008 6765 Mondays to Fridays between 9am and 5.30pm or by writing to FREEPOST Ref: RTRB-LUJ-AGBY, London Paramount, c/o PPS Group, Sky Light City Tower, 50 Basinghall Street, London, EC2V 5DE. A reasonable copying charge will apply (up to a maximum of £300 for the full suite of documents). The documents can also be obtained on a DVD, free of charge, by contacting LRCH as detailed here.

LRCH is consulting on the proposed application. Any representations on the proposals should be made in writing to "FREEPOST Ref: RTRB-LUJ-AGBY, London Paramount, c/o PPS Group, Sky Light City Tower, 50 Basinghall Street, London, EC2V 5DE", sent by email to [consultation@londonparamount.info](mailto:consultation@londonparamount.info), or by completing the feedback form which can be found on the LRCH's website at [www.londonparamount.info](http://www.londonparamount.info). The deadline for receiving responses is Friday 5 June 2015. Please quote "London Paramount Entertainment Resort Order" in any correspondence.

LRCH requests that responses state the grounds of representation, indicate who is making it, and provide an address to which any correspondence relating to the representation may be sent.

We may be required to make copies of representations available to the Secretary of State. We will, however, request that personal details are not placed on the public record. Personal details will be held securely in accordance with the Data Protection Act 1998 and will be used solely in connection with the consultation process and the development of the Project and, except as noted above, will not be disclosed to any third parties.

Bircham Dyson Bell LLP  
Solicitors and Parliamentary Agents acting for LRCH  
50 Broadway, London SW1H 0BL  
12 April 2015

*To advertise your public notice here*

**PLEASE CALL**

**01233 653461**

email: **appointments@kosmedia.co.uk**



# Kent on Sunday

FREE

www.kentnews.co.uk April 19, 2015

WEEKLY FREE NEWSPAPER OF THE YEAR

North & West edition No 656

EDF ENERGY London and South of England Media Awards



BMW Economics

Stephen James Ruxley



The Ultimate Driving Machine

## THE NEW BMW 1 SERIES. PURE BMW.

### BMW 118i M SPORT 5-DOOR SPORTS HATCH. MONTHLY RENTALS FROM £279 (PLUS INITIAL RENTAL\*).

Like all BMWs, with its near-perfect 50:50 weight distribution for superb agility and performance, the new 118i 5-Door M Sport is a driver's car through and through. BMW EfficientDynamics reduces consumption and emissions whilst increasing performance, giving it class-leading economy. With an excellent offer from BMW Economics, it's now even easier than ever to experience Pure BMW.

For more information or to arrange a test drive<sup>†</sup>, call us on 08442 451306 or visit [www.stephenjamesruxleybmw.co.uk](http://www.stephenjamesruxleybmw.co.uk).

**Stephen James Ruxley**  
Maidstone Road, Sidcup, Kent DA14 5BG

**BMW ECONOMICS.**

Official fuel economy figures for the BMW 118i M Sport 5-Door Sports Hatch: Urban 38.2mpg (7.4l/100km). Extra Urban 60.1mpg (4.7l/100km). Combined 49.6mpg (5.7l/100km). CO<sub>2</sub> emissions 133g/km. Figures may vary depending on driving style and conditions.

Stephen James Ruxley is a credit broker.

\*Initial rental £3,899. Price shown is for a 36 month Personal Contract Hire agreement for a BMW 118i M Sport 5-door Sports Hatch, with a contract mileage of 30,000 miles and excess mileage charge of 7.70p per mile. Applies to new vehicles ordered between 1 April and 30 June 2015 and registered by 30 September 2015 (subject to availability). Retail customers only. At the end of your agreement you must return the vehicle. Excess mileage, vehicle condition and other charges may be payable. Hire available subject to status to UK residents aged 18 or over. Guarantees and indemnities may be required. Terms and conditions apply. Offer may be varied, withdrawn or extended at any time. Hire provided by BMW Financial Services (GB) Limited, Bartley Way, Hook, Hampshire RG27 9UF. Stephen James Trading Group LLP, trading as Stephen James Ruxley, commonly introduce customers to BMW Financial Services, for which we may receive payment if you enter into an agreement with them. This introduction does not amount to independent financial advice. BMW EfficientDynamics reduces BMW emissions without compromising performance developments and is standard across the model range. †Test drive subject to applicant status and availability.



# Kent on Sunday

www.kentnews.co.uk April 19, 2015

WEEKLY FREE NEWSPAPER OF THE YEAR

North&West edition No 656

EDF ENERGY London and South of England Media Awards

**POLITICS**

## Tory contests seats 200 miles apart

Fights in Kent and  
South Wales

**BUSINESS**

## F1 legend buys kart circuit

Big plans ahead for  
popular race track

**HEALTH**

## Rise in smoking while pregnant

Special report on  
worrying new figures

**AGRICULTURE**

# Threat to our land

Expert says our soil may be  
barren 'within 100 years'

# DOVER to CALAIS from £45\*

Car and 7 passengers

myferrylink.com



## MYFERRYLINK

The only

DOVER TO CALAIS FERRY  
recommended by ferrets

CALL US ON 0844 2482 100

Terms and conditions apply. \*Each way, price subject to availability.  
Price includes a £5 fuel supplement.



**LONDON RESORT COMPANY HOLDINGS LTD**

**SECTION 48, PLANNING ACT 2008**

**REGULATION 4, INFRASTRUCTURE PLANNING (APPLICATIONS: PRESCRIBED FORMS AND PROCEDURE) REGULATIONS 2009**

**LONDON PARAMOUNT ENTERTAINMENT RESORT DEVELOPMENT CONSENT ORDER**

**NOTICE PUBLICISING A PROPOSED APPLICATION FOR A DEVELOPMENT CONSENT ORDER ("DCO")**

Notice is hereby given that London Resort Company Holdings Ltd ("LRCH") of 17 Albemarle Street, London W1S 4HP intends to apply to the Secretary of State for Communities and Local Government under section 37 of the Planning Act 2008 for the above mentioned DCO ("the proposed application").

The proposed application for the London Paramount Entertainment Resort project ("the Resort") which will be located on the Swanscombe Peninsula in the County of Kent, in the District of Dartford and the District of Gravesham, will be a nationally significant visitor attraction and leisure resort comprising a leisure core up to 50 ha in area, themed around the films and television programmes of Paramount Pictures, and currently including (but not limited to) the British Broadcasting Corporation (BBC) and Aardman Animations.

The Resort core will include—

- events spaces, rides, attractions, day-time and night-time shows and parades, entertainment venues, cinemas, theatres and nightclubs;
- ancillary food and beverage, retail, back of house/service and guest service facilities;
- hotel rooms as a part of a total provision of up to 5,000 hotel bedrooms across the Resort development as a whole;
- associated car parking as part of a maximum provision of 14,000 spaces; and
- hard and soft landscaping including amenity water features such as ponds and canals.

The proposed Resort development also includes the following principal elements—

- the creation of a visitor entrance square;
- the creation of a range of hotels, a water park and a transport interchange at the visitor entrance square;
- the construction of a new dual carriageway access road approximately 2.8 kilometres in length, between the A2(T)/B259 junction, and the Resort development area;
- the provision of a transport interchange at Ebbsfleet International Station, pedestrian facilities from London Road to the River Thames; pedestrian facilities and cycle track route along the Thames Path route; enhancements to the existing jetty on the River Thames to facilitate access by boat for the delivery of construction materials, and the creation of a floating pontoon for embarkment and disembarkment of visitors;
- the creation of a conference and exhibition event space;
- the creation of a creative business hub and office space for the creative industries;
- the creation of a green zone to include areas of environmental enhancement and wildlife habitat creation beside the River Thames;
- the provision of waste management, power generation and power distribution facilities;
- the enhancement of flood defence works; and
- the provision of ancillary emergency and security features.

The proposed Resort is "EIA development" for the purposes of the Infrastructure Planning (Environmental Impact Assessment) Regulations 2009. This means that the proposed works constitute development for which an Environmental Impact Assessment would be required. LRCH's proposed application for a DCO will, therefore, be accompanied by an Environmental Statement, containing the information about the environmental effects of the proposed development.

The documents, plans and maps showing the nature and location of the proposed application, including information so far compiled about environmental impacts (preliminary environmental information), may be inspected free of charge from Monday 27 April 2015 to Friday 5 June 2015 at the locations and times set out below:

Venue	Opening hours
<b>DARTFORD</b>	
Dartford Council Offices Civic Centre, Home Gardens, Dartford, Kent DA1 1DR	Monday, Tuesday, Wednesday & Thursday: 8:45am–5:15pm Friday: 8:45am–4:45pm Saturday & Sunday: Closed
Swanscombe and Greenhithe Town Council Council Offices, The Grove, Kent DA10 0GA	Monday, Tuesday, Thursday & Friday: 9:30am–1pm & 1:45pm–4pm Wednesday, Saturday & Sunday: Closed
Community Café Old Fire Station Café, Church Road, Swanscombe, Kent DA10 0HF	Monday, Tuesday, Wednesday, Thursday & Friday: 10am–2pm Saturday & Sunday: Closed
Greenhithe Library London Road, Greenhithe, Kent DA9 9EJ	Tuesday & Thursday: 1pm–5:30pm Saturday: 9:30am–12:30pm Monday, Wednesday, Friday & Sunday: Closed

Venue	Opening hours
Swan Valley Library Swanscombe Library Discovery Centre, Ebbsfleet Academy, Southfleet Road, Swanscombe, Kent, DA10 0BZ	Monday, Tuesday & Saturday: 10am–2pm Wednesday & Friday: 1pm–5pm Thursday & Sunday: Closed
Longfield Library 49 Main Road, Longfield, Kent DA3 7QT	Tuesday & Friday: 1pm–6pm Wednesday & Thursday: 9am–1pm Saturday: 10am–2pm Monday & Sunday: Closed
Dartford Library Central Park, Market Street, Dartford, Kent DA1 1EU	Monday, Tuesday, Wednesday, Thursday & Friday: 8:30am–6pm Saturday: 9am–5pm Sunday: Closed
Temple Hill Library 49 Main Road, Longfield, Kent DA1 5HY	Monday, Tuesday, Thursday & Friday: 9am–6pm Saturday: 10am–2pm Wednesday & Sunday: Closed
Ashen Drive Library Ashen Drive, Dartford, Kent DA1 3LY	Monday & Thursday: 2pm–6pm Tuesday & Friday: 9am–1pm Saturday: 10am–12pm Wednesday & Sunday: Closed
Fleetdown Library Swaledale Road, Dartford, Kent DA2 6JZ	Tuesday, Thursday & Friday: 9:30am–5:30pm Wednesday: 1:30pm–5:30pm Saturday: 10am–12pm Monday & Sunday: Closed
Sutton-at-Hone Library Main Road, Sutton-At-Hone, Dartford, Kent DA4 9HQ	Monday & Friday: 10am–6pm Tuesday & Saturday: 10am–2pm Wednesday, Thursday & Sunday: Closed
Summerhouse Drive Library 80 Summerhouse, Bexley, Kent DA6 2EE	Tuesday & Thursday: 9am–6pm Friday: 2pm–6pm Saturday: 10am–2pm Monday, Wednesday & Sunday: Closed
<b>GRAVESHAM</b>	
Gravesham Borough Council Civic Centre and Gateway, Windmill Street, Gravesend, Kent DA12 1AU	Monday, Tuesday, Wednesday, Thursday & Friday: 9am–5pm Saturday & Sunday: Closed
Coldharbour Library Coldharbour Road, Northfleet, Gravesend, Kent DA11 8AE	Monday, Wednesday, Thursday & Friday: 9am–6pm Tuesday: 9am–8pm Saturday: 9am–5pm Sunday: Closed
Gravesend Library Windmill Street, Gravesend, Kent DA12 1BE	Monday, Tuesday, Wednesday, Thursday & Friday: 9am–6pm Saturday: 9am–5pm Sunday: Closed
Dashwood Library Dashwood Road, Northfleet, Gravesend, Kent DA11 7LY	Monday & Friday: 9:30am–1pm & 2pm–5pm Tuesday & Saturday: 2pm–5pm Wednesday, Thursday & Sunday: Closed
Higham Library Villa Road, Higham, Rochester, Kent ME3 7BS	Monday, Wednesday & Friday: 9am–1pm Tuesday & Thursday: 2pm–5:30pm Saturday: 10am–2pm Sunday: Closed
Hive House Library Hive House, 10-11 The Hive, Northfleet, Gravesend, Kent DA11 9DE	Monday & Tuesday: 9am–12:30pm Thursday & Friday: 2pm–5pm Saturday: 10am–2pm Wednesday & Sunday: Closed
King's Farm Library Sun Lane, Gravesend, Kent DA12 5HR	Monday, Tuesday, Wednesday & Friday: 9am–5pm Saturday: 10am–2pm Thursday & Sunday: Closed
Marling Cross Library 266 Mackenzie Way, Gravesend, Kent DA12 5TY	Tuesday: 9:30am–1pm & 2pm–5pm Thursday: 9:30am–1pm Friday: 2pm–5pm Saturday: 2pm–4pm Monday, Wednesday & Sunday: Closed
Meopham Library Wrotham Road, Meopham, Gravesend, Kent DA13 0AH	Monday, Tuesday, Thursday & Friday: 9am–6pm Saturday: 9am–1pm Wednesday & Sunday: Closed

Venue	Opening hours
Riverview Park Library The Alma, Leander Drive, Gravesend, Kent DA12 4NG	Monday, Tuesday, Wednesday & Friday: 9am–6pm Saturday: 10am–2pm Thursday & Sunday: Closed
Vigo Library Village Hall, The Bay, Vigo, Gravesend, Kent DA13 0TD	Tuesday: 11am–1pm & 2pm–5pm Saturday: 9:30am–2:30pm Monday, Wednesday, Thursday, Friday & Sunday: Closed
<b>KENT (Maidstone)</b>	
Kent County Council County Hall, Maidstone, Kent ME14 1XQ	Monday, Tuesday, Wednesday, Thursday & Friday: 9am–5pm Saturday & Sunday: Closed
Maidstone Library Kent History and Library Centre, James Whatman Way, Maidstone, Kent ME14 1LQ	Monday, Tuesday, Wednesday & Friday: 9am–6pm Thursday: 9am–8pm Saturday: 9am–5pm Sunday: Closed
<b>SEVENOAKS</b>	
Sevenoaks Library Buckhurst Lane, Sevenoaks, Kent TN13 1LQ	Monday, Tuesday, Wednesday & Friday: 9am–6pm Thursday: 9am–8pm Saturday: 9am–5pm Sunday: Closed
<b>TONBRIDGE &amp; MALLING</b>	
Tonbridge Library 1 Avebury Avenue, Tonbridge, Kent TN9 1TG	Monday, Tuesday, Wednesday & Friday: 9am–6pm Thursday: 9am–8pm Saturday: 9am–5pm Sunday: Closed
<b>THURROCK</b>	
Grays Central Library Thameside Complex, Orsett Road, Grays, Essex RM17 5DX	Monday, Tuesday, Wednesday & Thursday: 10am–7pm Friday & Saturday: 10am–5pm Sunday: Closed
<b>LONDON BOROUGH OF BEXLEY</b>	
Central Library Townley Road, Bexleyheath DA6 7HJ	Monday, Tuesday & Wednesday: 10am–5:30pm Thursday: 10am–7pm Friday & Saturday: 10am–1pm Saturday: 1pm–5pm
<b>LONDON BOROUGH OF BROMLEY</b>	
Central Library High Street, Bromley BR1 1EX	Monday, Tuesday, Wednesday & Friday: 9.30am–6pm Thursday: 9.30am–8pm Saturday: 9.30am–5pm Sunday: Closed
<b>MEDWAY</b>	
Medway Council Gun Wharf, Dock Road, Chatham ME4 4TR	Monday, Tuesday, Wednesday, Thursday & Friday: 10am–4pm Saturday & Sunday: Closed

Project information may continue to be updated until Friday 8 May 2015 and you are therefore advised to check the website [www.londonparamount.info](http://www.londonparamount.info) and deposit locations for such updates.

Copies of the documents, plans and maps will be available on LRCH's website at [www.londonparamount.info](http://www.londonparamount.info) from Monday 27 April 2015. They can also be provided on request by emailing [consultation@londonparamount.info](mailto:consultation@londonparamount.info), by calling the Freephone number 0800 008 6765 Mondays to Fridays between 9am and 5.30pm or by writing to FREEPOST Ref: RTRB-LUJ-AGBY, London Paramount, c/o PPS Group, Sky Light City Tower, 50 Basinghall Street, London, EC2V 5DE. A reasonable copying charge will apply (up to a maximum of £300 for the full suite of documents). The documents can also be obtained on a DVD, free of charge, by contacting LRCH as detailed here.

LRCH is consulting on the proposed application. Any representations on the proposals should be made in writing to "FREEPOST Ref: RTRB-LUJ-AGBY, London Paramount, c/o PPS Group, Sky Light City Tower, 50 Basinghall Street, London, EC2V 5DE", sent by email to [consultation@londonparamount.info](mailto:consultation@londonparamount.info), or by completing the feedback form which can be found on the LRCH's website at [www.londonparamount.info](http://www.londonparamount.info). The deadline for receiving responses is Friday 5 June 2015. Please quote "London Paramount Entertainment Resort Order" in any correspondence.

LRCH requests that responses state the grounds of representation, indicate who is making it, and provide an address to which any correspondence relating to the representation may be sent.

We may be required to make copies of representations available to the Secretary of State. We will, however, request that personal details are not placed on the public record. Personal details will be held securely in accordance with the Data Protection Act 1998 and will be used solely in connection with the consultation process and the development of the Project and, except as noted above, will not be disclosed to any third parties.

Bircham Dyson Bell LLP  
Solicitors and Parliamentary Agents acting for LRCH  
50 Broadway, London SW1H 0BL

12 April 2015



# Lloyd's List

lloydslist.com | Wednesday April 15, 2015  
Leading maritime commerce since 1734

## Anangel scraps older capes as it swoops on Scorpio trio

**New data shows Greeks favour Japanese tonnage for secondhand buys**

ANANGEL Maritime Services, the dry arm of the Angelicoussis Shipping Group, is flushing some of its older bulkers from the fleet as it works on clinching a swoop for three capesize newbuildings from Scorpio Bulkers, writes Nigel Lowry.

The triple acquisition from the Scorpio orderbook did not appear to have been finalised by Tuesday afternoon in Europe, according to Lloyd's List's sources.

However, affirmation of the deal was said to be imminent with both sides "working on the details".

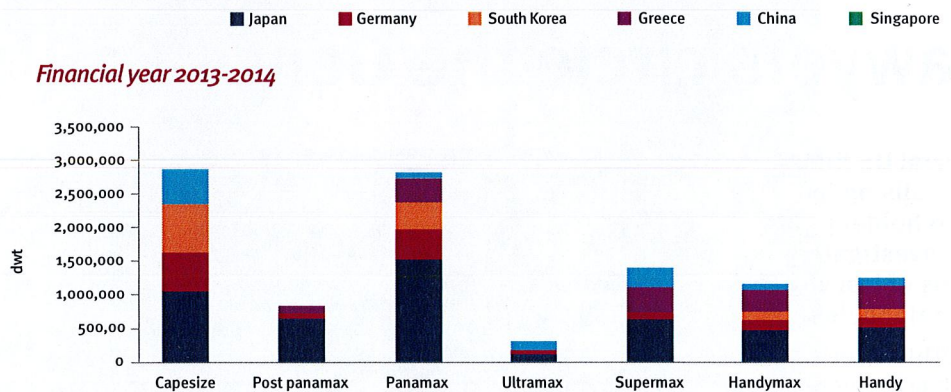
One executive close to the Greece-based owner said that while Anangel has let go two elderly capesizes in recent weeks, the Scorpio deal should not necessarily be coloured purely as fleet renewal.

With newbuilding prices for capes still put by brokers as high as \$52m to \$53m, the reported price of \$44m agreed for each of the Scorpio vessels is low enough for there to have been opportunistic motivation.

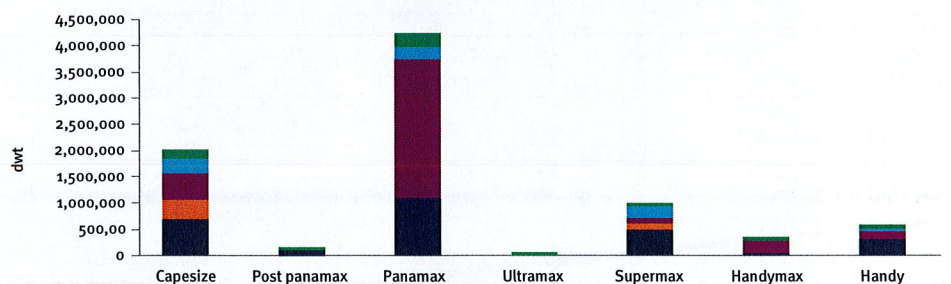
If the deal completes as expected, it would lift the

**Continued on page 2**

COUNTRY OF ORIGIN OF GREEK SECONDHAND BULKER ACQUISITIONS, INCLUDING RESALES



Financial year 2014-2015 \*



\*Includes Star Bulk's acquisition of the Excel Maritime fleet and its merger with Oceanbulk.

Source: VesselsValue.com

### Greek owners look to Japan for secondhand tonnage

Japanese sellers have been by far the main source of secondhand bulkers bought by Greek owners over the last two years.

They spent a staggering \$2bn on buying 7.6m dwt of dry bulk capacity from Japanese owners in the two years to last month.

While Japanese-owned tonnage was clearly the top target for Greeks in the 2013-2014 financial year, according to VV data, it was pipped in the last year by buying from fellow Greeks.

However, last year's data showing Greek-Greek details as the main source of incoming secondhand bulkers was arguably distorted by Star Bulk's acquisition of the Excel Maritime fleet and its merger with Oceanbulk.